



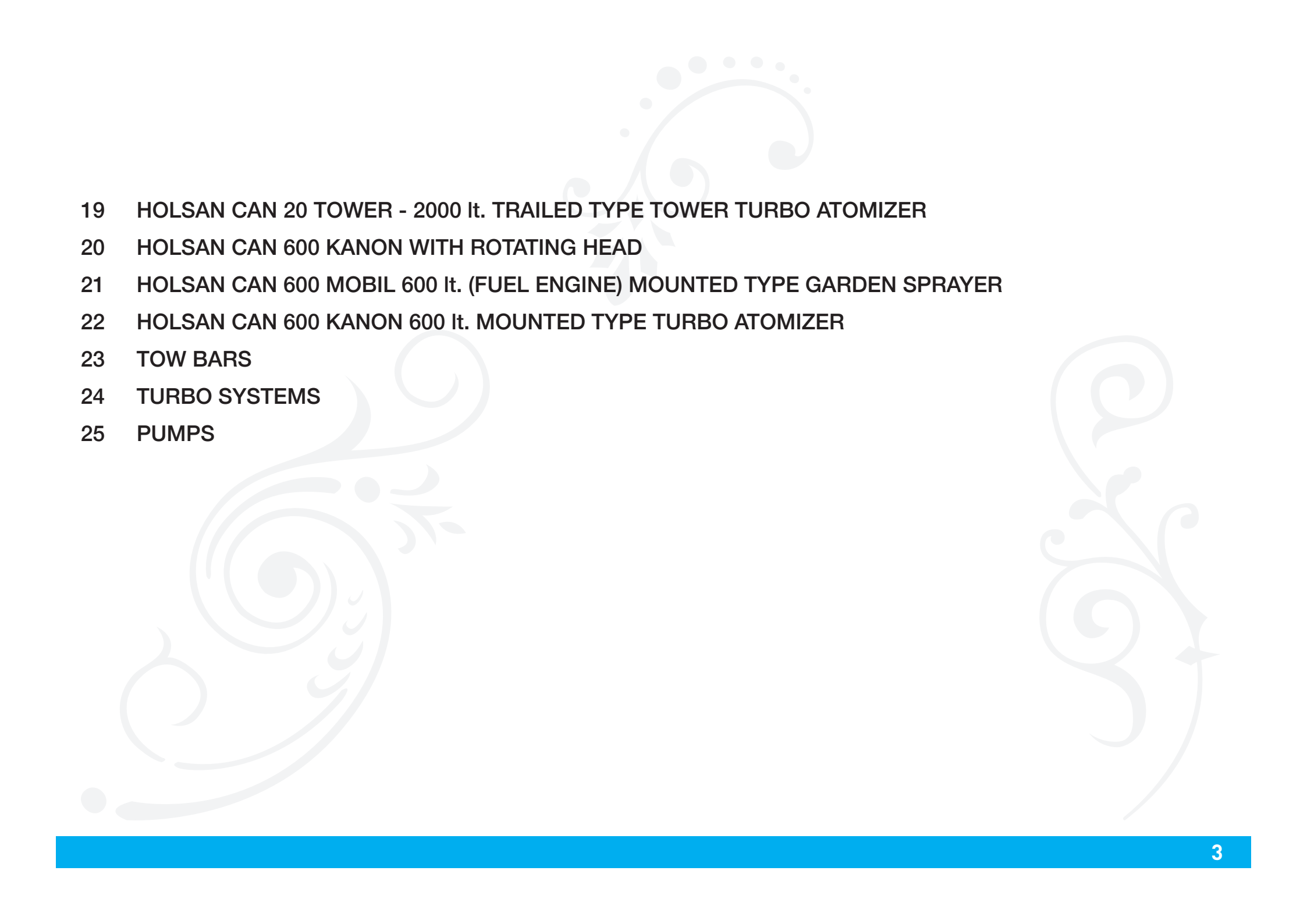
Holsan

PRODUCT
CATALOG

CONTENTS

- 4-5 HOLSAN'S HISTORY
- 6 HOLSAN SUPER MOT 1 100 lt. WHEELBARROW SPRAYER FOR GARDENING (FUEL ENGINE)
- 7 HOLSAN SUPER MOT 2 200 lt. WHEELBARROW SPRAYER FOR GARDENING (ELECTRIC)
- 8 HOLSAN SUPER MIL 10A 1000 lt. TRAILED TYPE GARDEN SPRAYER
- 9 HOLSAN SUPER MIL 20, 2000 lt. TRAILED TYPE GARDEN SPRAYER
- 10 HOLSAN SUPER MIL 4, 400 lt. MOUNTED TYPE TURBO ATOMIZER
- 11 HOLSAN CAN 600, 600 lt. MOUNTED TYPE TURBO ATOMIZER
- 12 HOLSAN CAN 500, 500 lt. TRAILED TYPE TURBO ATOMIZER
- 13 HOLSAN CAN 11 KASIRGA 900P 1000 lt. TRAILED TYPE TURBO ATOMIZER
- 14 HOLSAN CAN 11, 1000 lt. TRAILED TYPE TURBO ATOMIZER
- 15 HOLSAN CAN 15 KASIRGA 1500 lt. TRAILED TYPE TURBO ATOMIZER
- 16 HOLSAN CAN 20, 2000 lt. (LONG TYPE) TRAILED TYPE TURBO ATOMIZER
- 17 HOLSAN CAN 20, 2000 lt. (NARROW TYPE) TRAILED TYPE TURBO ATOMIZER
- 18 HOLSAN CAN 20, 800-900 SF 2000 lt. TRAILED TYPE TURBO ATOMIZER

As we constantly work to utilize upcoming advanced technologies and changes within HOLSAN A.Ş. we would like to kindly remind you to reserve the right to make changes in our products without notice.

- 
- The page features a decorative background with light gray floral and scrollwork patterns. A solid blue horizontal bar is located at the bottom of the page.
- 19 HOLSAN CAN 20 TOWER - 2000 lt. TRAILED TYPE TOWER TURBO ATOMIZER
 - 20 HOLSAN CAN 600 KANON WITH ROTATING HEAD
 - 21 HOLSAN CAN 600 MOBIL 600 lt. (FUEL ENGINE) MOUNTED TYPE GARDEN SPRAYER
 - 22 HOLSAN CAN 600 KANON 600 lt. MOUNTED TYPE TURBO ATOMIZER
 - 23 TOW BARS
 - 24 TURBO SYSTEMS
 - 25 PUMPS

HOLSAN'S HISTORY

60+ YEARS OF EXPERIENCE

Ü.Sadi Gökçeatam who was the Turkish distributor of Germany's famous agricultural sprayer machines manufacturer Gebr. HOLDER Maschinenfabrik from 1946 to 1970 passed away in 1962. His position was soon replaced by his son Çetin Gökçeatam and the company was transformed into a family company with the title Ü.Sadi Gökçeatam Tic.ve San. Ltd. Şti. As this company was the only company working in this field in Turkey at the time, they were the sole importer of over 1 million dollars worth of agricultural sprayers from Holder. This large scale import operation and loss of foreign currency saddened Çetin Gökçeatam who had earned his college degree in agricultural sprayers and interned between 1949-53 in United States. This situation came to an end four years later in 1966 with founding of HOLSAN Tarım Alet ve Makinaları San. A.Ş.





Tens of thousands of HOLSAN agricultural sprayers has earned favor and appreciation of our farmers by proving their quality in Turkey and overseas since 1966. Holsan Can series Kasirga Model Turbo atomizers are some of our most demanded machinery and we are constantly increasing production of these machines. Our Tornado-Çet model turbo atomizers helped in broadening our product spectrum with stainless steel and fiber tanks. Our stainless steel sprayers in particular were exported all the way to Mexico and were very well received. Additionally, popularity of our Kanon, Tower Type and Twin-Type Fan sprayers are evergrowing. These machines were designed by Çetin Gökçeataam, representing past decade and Can Gökçeataam, representing new decade and were manufactured by HOLSAN's experienced technicians. We are glad and proud to be relentlessly working in service of our farmers since inception.



HOLSAN SUPER MOT 1 100 lt. WHEELBARROW SPRAYER FOR GARDENING (FUEL ENGINE)

TANK: 100 lt. anti-corrosive fiberglass tank with strainer, level indicator, suction filter and drain valve

PUMP: Imovilli PM33 high pressure 3-diaphragm that can deliver 34 lt./min. 0-50 bar

ENGINE: Honda GX160 5.5 Hp 4-stroke fuel engine

CHASSIS: Steel chassis mounted on 2x 400 x 8, 4 Ply balloon tires

EQUIPMENT: 1x spraying gun, 1x 15 m high pressure hose, 1x 50 m capacity hose reel.

RANGE: 8-12 m

DIMENSIONS: 750 mm x 2035 mm x 990 mm (W x L x H)

WEIGHT: 86 Kg



HOLSAN SUPER MOT 2 200 lt. WHEELBARROW SPRAYER FOR GARDENING (ELECTRIC)

TANK: 200 lt. anti-corrosive fiberglass tank with strainer, level indicator, suction filter and drain valve

PUMP: Imovilli PM33 high pressure 3-diaphragm that can deliver 34 lt./min. 0-50 bar

ENGINE: 4kW 3-phase electric motor

CHASSIS: Steel chassis mounted on 2x 400 x 8, 4 Ply balloon tires

EQUIPMENT: 1x spraying gun, 1x 15 m high pressure hose, 1x 50 m capacity hose reel.

RANGE: 8-12 m

DIMENSIONS: 680 mm x 2280 mm x 940 mm (W x L x H)

WEIGHT: 100 Kg.



HOLSAN SUPER MIL 10A 1000 Lt. TRAILED TYPE GARDEN SPRAYER

TANK: 1000 Lt. anti-corrosive fiberglass tank with hydraulic mixer, lockable lid, nybolt strainer, level indicator in front and on the side and drain valve

PUMP: Imovilli M73 high pressure 3-diaphragm pump that can deliver 70 Lt. (18.5 gallons)/min. 0-50 bar

PTO SHAFT: Standard, constant velocity shaft with adjustable tow-bar

EQUIPMENT: 2x spraying guns, 2x 15 m high pressure hose, 2x 50 m capacity hose reels, 1x spraying platform.

RANGE: 8-12 m

DIMENSIONS: 1470 mm x 3380 mm x 1340 mm (W x L x H)

WEIGHT: 380 Kg



HOLSAN SUPER MIL 20, 2000 Lt. TRAILED TYPE GARDEN SPRAYER

TANK: 2000 Lt. anti-corrosive fiberglass tank with hydraulic mixer, lockable lid, nybolt strainer, level indicator in front and on the side and drain valve

PUMP: Imovilli M135 high pressure 5-diaphragm pump that can deliver 115 lt. (30.4 gallons)/min. 0-50 bar

PTO SHAFT: Standard, constant velocity shaft with adjustable tow-bar

EQUIPMENT: 2x spraying guns, 2x 15 m high pressure hose, 2x 50 m capacity hose reels, 1x spraying platform.

RANGE: 8-12 m

DIMENSIONS: 1720 mm x 3710 mm x 1460 mm (W x L x H)

WEIGHT: 520 Kg



HOLSAN SUPER MIL 4, 400 lt. MOUNTED TYPE TURBO ATOMIZER

TANK: 400 lt. anti-corrosive fiberglass tank with hydraulic mixer, lockable lid, nybolt strainer, level indicator and drain valve

PUMP: Imovilli M135 high pressure 5-diaphragm pump that can deliver 115 lt. (30.4 gallons)/min. 0-50 bar

PTO SHAFT: Standard, constant velocity shaft with adjustable tow-bar

TURBO: 8 blades 800 mm fan with stainless steel conveyor with gearbox set to 1950-2450 rpm

CONTROLLER: Tractor mounted Braglia brand controller

RANGE: Even air distribution, 8 m left, 8 m right, 16 m total

DIMENSIONS: 1730 mm x 1460 mm x 1350 mm (W x L x H)

WEIGHT: 320 Kg



HOLSAN CAN 600, 600 lt.

MOUNTED TYPE TURBO ATOMIZER

TANK: 600 lt. anti-corrosive fiberglass tank with hydraulic mixer, lockable lid, nybolt strainer, level indicator and drain valve

PUMP: Imovilli M135 high pressure 5-diaphragm pump that can deliver 115 lt. (30.4 gallons)/min. 0-50 bar

PTO SHAFT: Standard, constant velocity shaft with adjustable tow-bar

TURBO: 8 blades 800 mm fan with stainless steel conveyor with gearbox set to 1950-2450 rpm.

CONTROLLER: Tractor mounted Braglia brand controller **RANGE:** Even air distribution, 8 m left, 8 m right, 16 m total

DIMENSIONS: 1730 mm x 1460 mm x 1580 mm (W x L x H)

WEIGHT: 347 Kg



HOLSAN CAN 11 KASIRGA 900P 1000 lt. TRAILED TYPE TURBO ATOMIZER

TANK: 1000 lt. anti-corrosive fiberglass tank with hydraulic mixer, lockable lid, nybolt strainer, level indicator in front and on the side and drain valve

PUMP: Imovilli M155 high pressure 5-diaphragm pump that can deliver 142 lt. (37.5 gallons)/min. 0-50 bar

PTO SHAFT: 80° wide angle, constant velocity shaft with adjustable tow-bar

TURBO: 900 mm fan with stainless steel conveyor with gearbox set to 1950-2450 rpm. Contains 16 nozzles

CHASSIS: Strong steel construction chassis with steps on both sides, conveyor shield, mounted on 10.0/75-15.3 tubeless tires

CONTROLLER: Tractor mounted Braglia brand controller

RANGE: Even air distribution, 15 m left, 15 m right, 30 m total

DIMENSIONS: 1540 mm x 3450 mm x 1285 mm (W x L x H)

WEIGHT: 560 Kg



HOLSAN CAN 11 1000 lt.

TRAILED TYPE TURBO ATOMIZER

TANK: 1000 lt. anti-corrosive fiberglass tank with hydraulic mixer, lockable lid, nybolt strainer, level indicator in front and on the side and drain valve

PUMP: Imovilli P186 high pressure 6-pistons pump that can deliver 172 lt. (45.4 gallons)/min. 0-50 bar

PTO SHAFT: 80° wide angle, constant velocity shaft with adjustable tow-bar

TURBO: 800 mm fan with stainless steel conveyor with gearbox set to 1950-2450 rpm. Contains 14 nozzles

CHASSIS: Strong steel construction chassis with steps on both sides, conveyor shield, mounted on 235xR15 tires

CONTROLLER: Tractor mounted Braglia brand controller

RANGE: Even air distribution, 12 m left, 12m right, 24 m total

DIMENSIONS: 1500 mm x 3490 mm x 1270 mm (W x L x H)

WEIGHT: 534 Kg



HOLSAN CAN 15 KASIRGA 1500 lt. TRAILED TYPE TURBO ATOMIZER

TANK: 1500 lt. anti-corrosive fiberglass tank with steel wave breaker, hydraulic mixer, lockable lid, nybolt strainer, level indicator in front and on the side and drain valve

PUMP: Imovilli M155 high pressure 5-diaphragm pump that can deliver 142 lt. (37.5 gallons)/min. 0-50 bar

PTO SHAFT: 80° wide angle, constant velocity shaft with adjustable tow-bar

TURBO: 900 mm fan with stainless steel conveyor with gearbox set to 1950-2450 rpm. Contains 16 nozzles

CHASSIS: Strong steel construction chassis with steps on both sides, conveyor shield, mounted on 10.0/75-15.3 tubeless tires

CONTROLLER: Tractor mounted Braglia brand controller

RANGE: Even air distribution, 15 m left, 15 m right, 30 m total

DIMENSIONS: 1720 mm x 3870 mm x 1340 mm (W x L x H)

WEIGHT: 628 Kg



HOLSAN CAN 20 2000 lt.

TRAILED TYPE TURBO ATOMIZER

TANK: 2000 lt. anti-corrosive fiberglass tank with steel wave breaker, hydraulic mixer, lockable lid, nybolt strainer, level indicator in front and on the side and drain valve

PUMP: Imovilli M155 high pressure 5-diaphragm pump that can deliver 142 lt. (37.5 gallons)/min. 0-50 bar

PTO SHAFT: 80° wide angle, constant velocity shaft with adjustable tow-bar

TURBO: 900 mm fan with stainless steel conveyor with gearbox set to 1950-2450 rpm. Contains 16 nozzles

CHASSIS: Strong steel construction chassis with steps on both sides, conveyor shield, mounted on 10.0/75-15.3 tubeless tires

CONTROLLER: Tractor mounted Braglia brand controller

RANGE: Even air distribution, 12 m left, 12m right, 24 m total

DIMENSIONS: 1720 mm x 4030 mm x 1460 mm (W x L x H)

WEIGHT: 620 Kg



HOLSAN CAN 20, 2000 lt. (LONG TYPE)

TRAILED TYPE TURBO ATOMIZER

TANK: 2000 lt. anti-corrosive fiberglass tank with steel wave breaker, hydraulic mixer, lockable lid, nybolt strainer, level indicator in front and on the side and drain valve

PUMP: Imovilli P186 high pressure 6-pistons pump that can deliver 172 lt. (45.4 gallons)/min. 0-50 bar

PTO SHAFT: 80° wide angle, constant velocity shaft with adjustable tow-bar

TURBO: 900 mm fan with stainless steel conveyor with gearbox set to 1950-2450 rpm. Contains 16 nozzles

CHASSIS: Strong steel construction chassis with steps on both sides, conveyor shield, mounted on 10.0/75-15.3 tubeless tires

CONTROLLER: Tractor mounted Braglia brand controller

RANGE: Even air distribution, 15 m left, 15 m right, 30 m total

DIMENSIONS: 1720 mm x 4400 mm x 1350 mm (on low) (W x L x H)



HOLSAN CAN 20, 2000 lt. (NARROW TYPE)

TRAILED TYPE TURBO ATOMIZER

TANK: 2000 lt. anti-corrosive fiberglass tank with steel wave breaker, hydraulic mixer, lockable lid, nybolt strainer, level indicator in front and on the side and drain valve

PUMP: Imovilli M155, 5 membranes that can deliver 142 lt. (45.4 gallons)/min. 0-50 bar

PTO SHAFT: 80° wide angle, constant velocity shaft with adjustable tow-bar

TURBO: 900 mm fan with stainless steel conveyor with gearbox set to 1950-2450 rpm. Contains 16 nozzles

CHASSIS: Strong steel construction chassis with steps on both sides, conveyor shield, mounted on 10.0/75-15.3 tubeless tires

CONTROLLER: Tractor mounted Braglia brand controller

RANGE: Even air distribution, 15 m left, 15 m right, 30 m total

DIMENSIONS: 1320 mm x 4430 mm x 1460 mm (W x L x H)



HOLSAN CAN 20 900 SF 2000 lt.

TRAILED TYPE TURBO ATOMIZER

TANK: 2000 lt. anti-corrosive fiberglass tank with steel wave breaker, hydraulic mixer, lockable lid, nybolt strainer, level indicator in front and on the side and drain valve

PUMP: Imovilli M155 high pressure 5-diaphragm pump that can deliver 142 lt. (37.5 gallons)/min. 0-50 bar

PTO SHAFT: 80° wide angle, constant velocity shaft with adjustable tow-bar

TURBO: 900 mm super-fan with stainless steel conveyor with gearbox set to 1950-2450 rpm. Contains 14 / 16 nozzles

CHASSIS: Strong steel construction chassis with steps on both sides, conveyor shield, mounted on 10.0/75-15.3 tubeless tires

CONTROLLER: Tractor mounted Braglia brand controller

RANGE: Even air distribution 12 / 15 m left, 12 / 15 m right, 24 / 30 m total

DIMENSIONS: 1720 mm x 4000 mm x 1460 mm (W x L x H)

WEIGHT: 650 Kg



HOLSAN CAN 20 TOWER - 2000 Lt. TRAILED TYPE TOWER TURBO ATOMIZER



TANK: 2000 Lt. anti-corrosive fiberglass tank with steel wave breaker, hydraulic mixer, lockable lid, nybolt strainer, level indicator in front and on the side and drain valve

PUMP: Imovilli M155 high pressure 5-diaphragm pump that can deliver 142 lt. (37.5 gallons)/min. 0-50 bar

PTO SHAFT: 80° wide angle, constant velocity shaft with adjustable tow-bar

TURBO: Tower type 900 mm super-fan with conveyor, 18 stainless steel even distribution blades with gearbox set to 1950-2450 rpm. Contains 20 nozzles.

CHASSIS: Strong steel construction chassis with steps on both sides, conveyor shield, mounted on 10.0/75-15.3 tubeless tires

DIMENSIONS: 1720 mm x 3930 mm x 2140 mm (W x L x H)

WEIGHT: 750 Kg

HOLSAN CAN 600 KANON WITH ROTATING HEAD MOUNTED TYPE TURBO ATOMIZER



TANK: Mounted type 600 and 800 lt., trailed type 1000 - 1500 - 2000 lt. capacity fiberglass tank, hydraulic mixer, lockable lid, nybolt strainer, level indicator and drain valve

PUMP: Imovilli M135 high pressure 5-diaphragm pump that can deliver 115 lt. (30.4 gallons)/min. 0-50 bar

PTO SHAFT: Standard, constant velocity shaft with adjustable tow-bar

TURBO: Canon type with 6 nozzles at the tip, 6 nozzles on the side, total of 12 nozzles. Head can be adjusted 45°. Dual rotors. Can be used to spray a distance of 50 meters on a non-windy day with a 70 hp tractor. Gearbox set to 1950-2450 rpm.

CHASSIS: Strong steel construction

HOLSAN CAN 600 KANON 600 lt.

MOUNTED TYPE TURBO ATOMIZER

TANK: 600 lt. anti-corrosive fiberglass tank with hydraulic mixer, lockable lid, nybolt strainer, level indicator and drain valve

PUMP: Imovilli M135 high pressure 5-diaphragm pump that can deliver 115 lt. (30.4 gallons)/min. 0-50 bar

PTO SHAFT: Standard, constant velocity shaft with adjustable tow-bar

TURBO: Canon type with 6 nozzles at the tip, 6 nozzles on the side, total of 12 nozzles. Head can be adjusted 45°. Dual rotors. Can be used to spray a distance of 50 meters on a non-windy day with a 70 hp tractor. Gearbox set to 1950-2450 rpm.

CHASSIS: Strong steel construction with steps

DIMENSIONS: 1580 mm x 1460 mm x 2500 mm (W x L x H)

WEIGHT: 535 Kg



HOLSAN CAN 600 MOBIL 600 lt. (FUEL ENGINE)

MOUNTED TYPE GARDEN SPRAYER

TANK: 600 lt. anti-corrosive fiberglass tank with hydraulic mixer, lockable lid, nybolt strainer, level indicator and drain valve

PUMP: Imovilli PM33 high pressure 3-diaphragm that can deliver 34 lt./min. 0-50 bar

ENGINE: Honda GX160 5.5 Hp 4-stroke fuel engine

CHASSIS: Steel construction. It can be easily mounted onto a pickup truck or can be mounted to a tractor from three mounting points.

EQUIPMENT: 2x spraying guns, 2x 15 m high pressure hose, 2x 50 m capacity hose reels

DIMENSIONS: 1200 mm x 1270 mm x 1280 mm (W x L x H)

WEIGHT: 191 Kg



TOW BARS

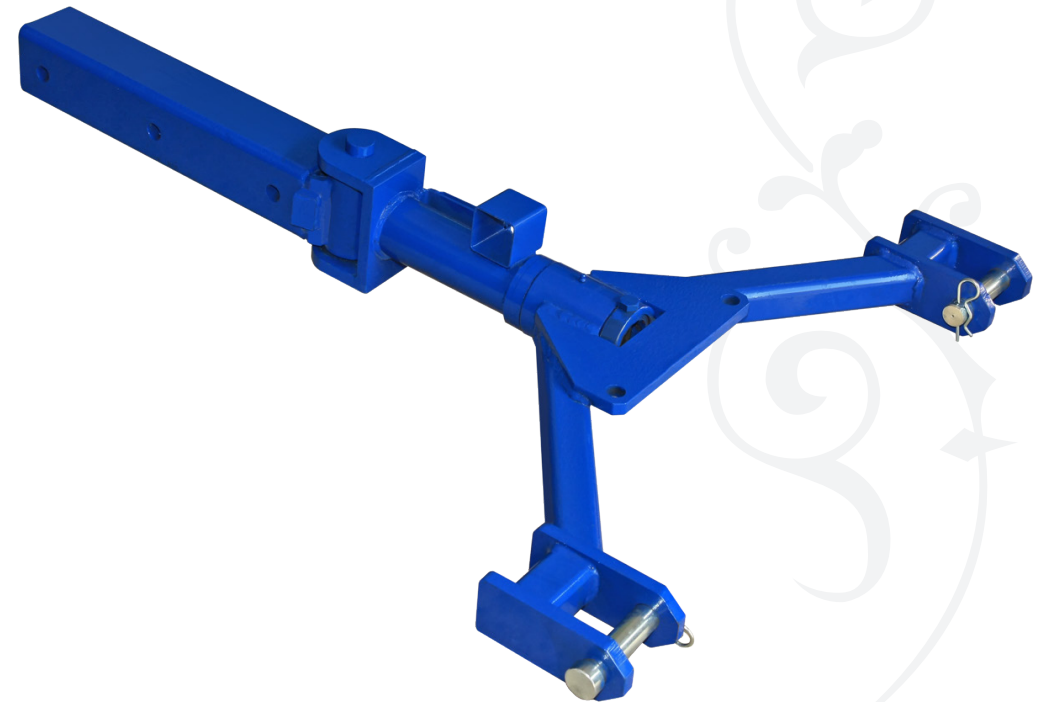
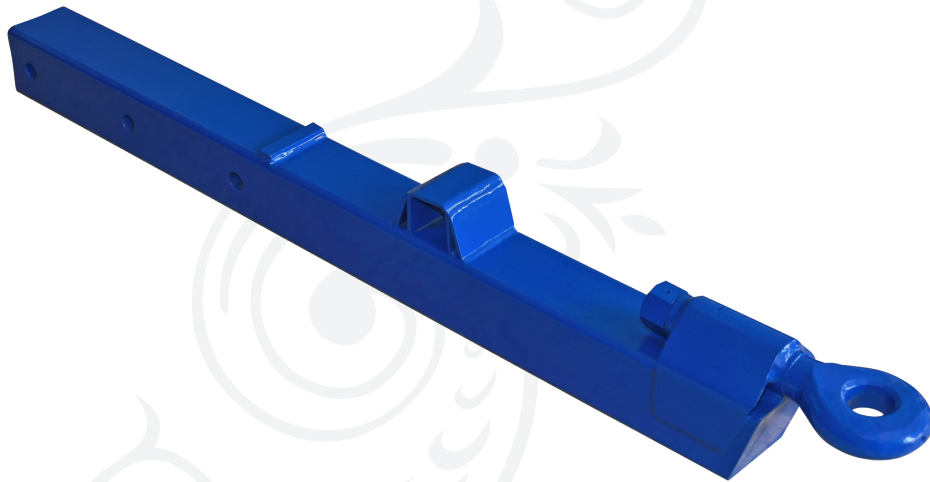
STANDARD AND ROTATING HEAD

STANDARD TOW BAR

Standard tow bar that comes default with all of our machines.
Adjustable front-back distance

ROTATING HEAD TOW BAR

Mounts on tractor's hydraulic arms. Eases turns between rows of crops. Follows tractor's trail.



NORMAL FAN TURBO

8 blades, 5-levels air adjustment, 8 static blades for even air distribution, 800 mm turbo has 14 nozzles, 900 mm turbo has 16 nozzles.



SUPER FAN TURBO

10 blades, 5-levels air adjustment, 18 static stainless steel blades for even air distribution, 800 mm turbo has 14 nozzles, 900 mm turbo has 16 nozzles and 1000 mm turbo has 18 nozzles.



PUMPS



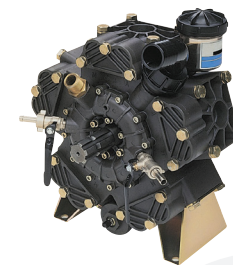
IMOVILLI PM33 PUMP

3 pistons, Flow: 34 lt./min. Pressure: 0-50 bar, Power Req.: 4,5 Hp, Max. 1000 rev./min. Dimensions: W: 268 mm L: 269 mm H: 268 mm Weight: 8,8 Kg



IMOVILLI M73 PUMP

3 membranes, Flow: 70 lt./min. Pressure: 0-50 bar, Power Req.: 10 Hp, Max. 550 rev./min. Dimensions: W: 391 mm L: 308 mm H: 290 mm Weight: 19,5 Kg



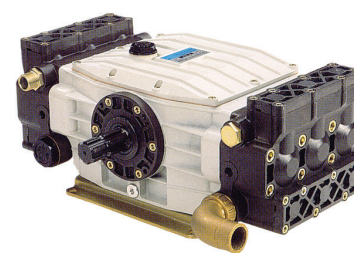
IMOVILLI M135 PUMP

5 membranes, Flow: 115 lt./min. Pressure: 0-50 bar, Power Req.: 16 Hp, Max. 550 rev./min. Dimensions: W: 390 mm L: 308 mm H: 400 mm Weight: 27,5 Kg



IMOVILLI M155 PUMP

5 membranes, Flow: 142 lt./min. Pressure: 0-50 bar, Power Req.: 20 Hp, Max. 550 rev./min. Dimensions: W: 430 mm L: 318 mm H: 441 mm Weight: 43 Kg



IMOVILLI P186 PUMP

6 pistons, Flow: 176 lt./min. Pressure: 0-50 bar, Power Req.: 24 Hp, Max. 550 rev./min. Dimensions: W: 430 mm L: 518 mm H: 231 mm Weight: 41,5 Kg

Holsan

HOLSAN TARIM ALET VE MAKİNALARI SANAYİ A.Ş.

Köşklü Çeşme Mah. Yeni Bağdat Cad. No: 122 Gebze / Kocaeli / Türkiye

Phone : +90 262 744 03 57 / +90 262 744 45 94

Mobile : +90 (530) 203 37 11 (Turkcell) / +90 (530) 203 37 88 (Turkcell)

Fax: : +90 262 744 18 97

E-mail : posta@holsan.com

Web : www.holsan.com

